



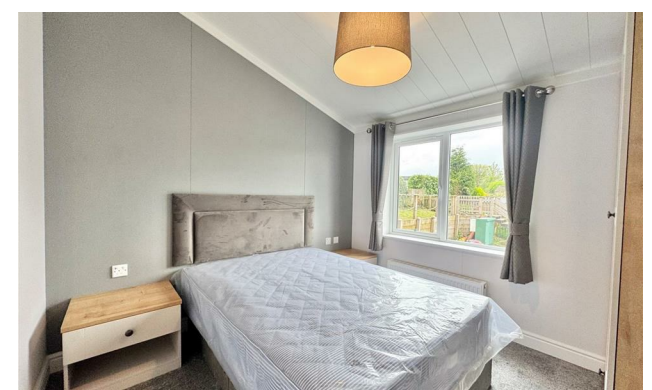
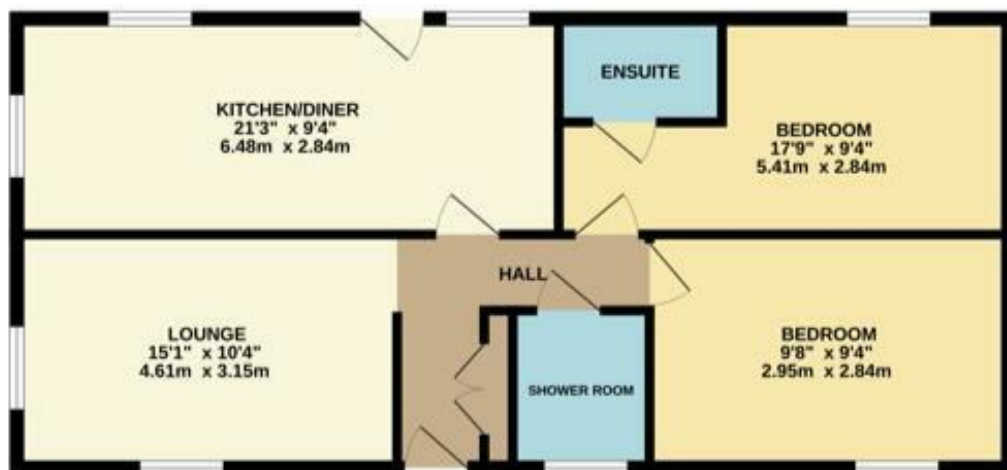
## 1 OAK ROAD LINDOW COURT PARK MOBBERLEY WA16 7DP

To facilitate a quick sale, we are offering a substantial lump-sum reduction on the following home:  
 •Reduced from £240,000 to £215,000

This exceptional home is located within a pet-friendly park community, offering a welcoming lifestyle for both residents and their pets.

To make your move even easier, we can also provide an Assisted Sale Scheme and flexible finance options, helping you secure your new home with confidence and convenience.

This brand new park home for the Over-45's, ideally positioned in a highly sought after semi rural location. Internally, the property offers two well proportioned bedrooms, a generous open-plan dining and kitchen area, well proportioned lounge and a stylish three-piece shower room suite as well as the master bedroom benefiting from its own en-suite. The spacious kitchen/diner is both attractive and practical, featuring a range of modern matching wall and base units alongside integrated appliances. Both bedrooms benefit from built-in wardrobes, providing excellent additional storage space. Externally, the home enjoys an enclosed fenced perimeter and a paved pathway, creating a private and low maintenance outdoor space. Must view!



- Brand-New Park Home
- Two Bedrooms
- Two Shower Rooms
- Semi-Rural Location
- Lindow Court Park
- Must View